



Research Park at Florida Atlantic University

**INNOVATION CENTRE 4
3651 FAU BOULEVARD
BOCA RATON, FL 33431**



Contact Us: 954.903.3900

Property Video



Greg Martin
Principal
greg.martin@avisonyoung.com



Justin Cope
Vice President
justin.cope@avisonyoung.com



Lisa Hernandez
Associate
lisa.hernandez@avisonyoung.com

PROPERTY HIGHLIGHTS

- Adjacent to Florida Atlantic University and the Boca Raton Executive Airport
- Access to Tri-Rail by Palm Tram or El Rio walking/bike trail
- University collaboration among park tenants
- On-Site Management
- On-Site Restaurant

CLICK TO VIEW **BENEFITS FOR RESEARCH PARK COMPANIES**

www.research-park.org/benefits-leasing

AVAILABLE SUITES

Suite 215/300A: 13,299 SF

Suite 300: 7,417 SF

} Up to 20,716 SF

RENTAL RATE: \$18.00 NNN

OPERATING EXPENSES: \$6.49

NET OF SUITE ELECTRIC & JANITORIAL

For more Information, Contact:

954.903.3900

Greg Martin

Greg.Martin@avisonyoung.com

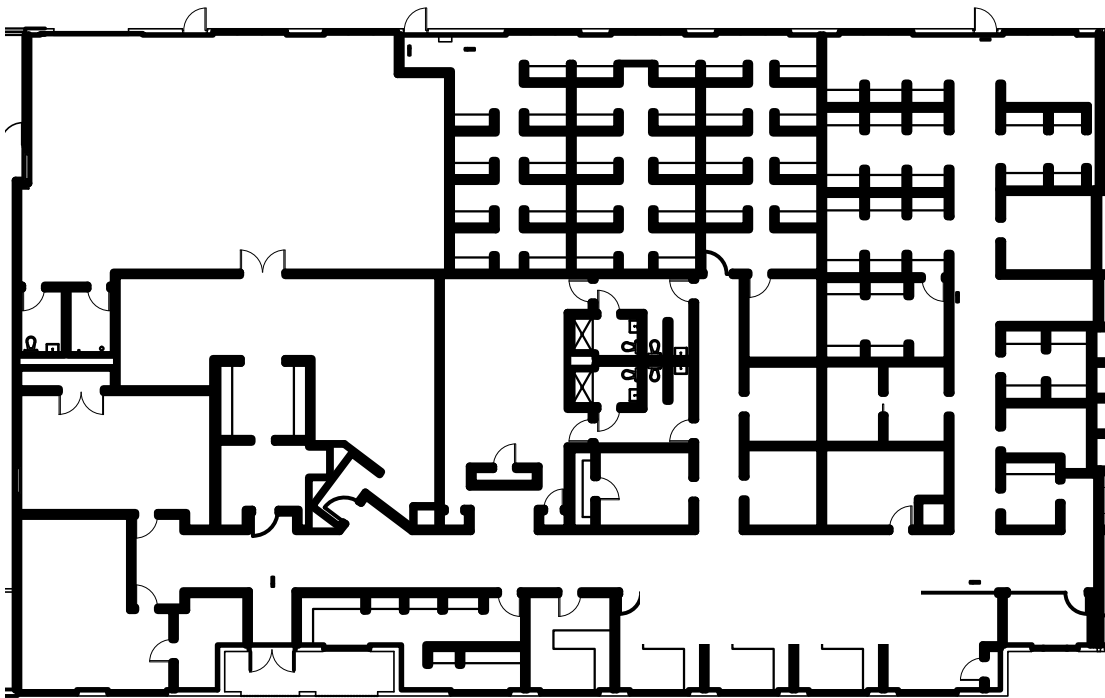
Justin Cope

Justin.Cope@avisonyoung.com

Lisa Hernandez

Lisa.Hernandez@avisonyoung.com

SUITE 215/300A - 13,299 SF



For more Information, Contact:

954.903.3900

Greg Martin

Greg.Martin@avisonyoung.com

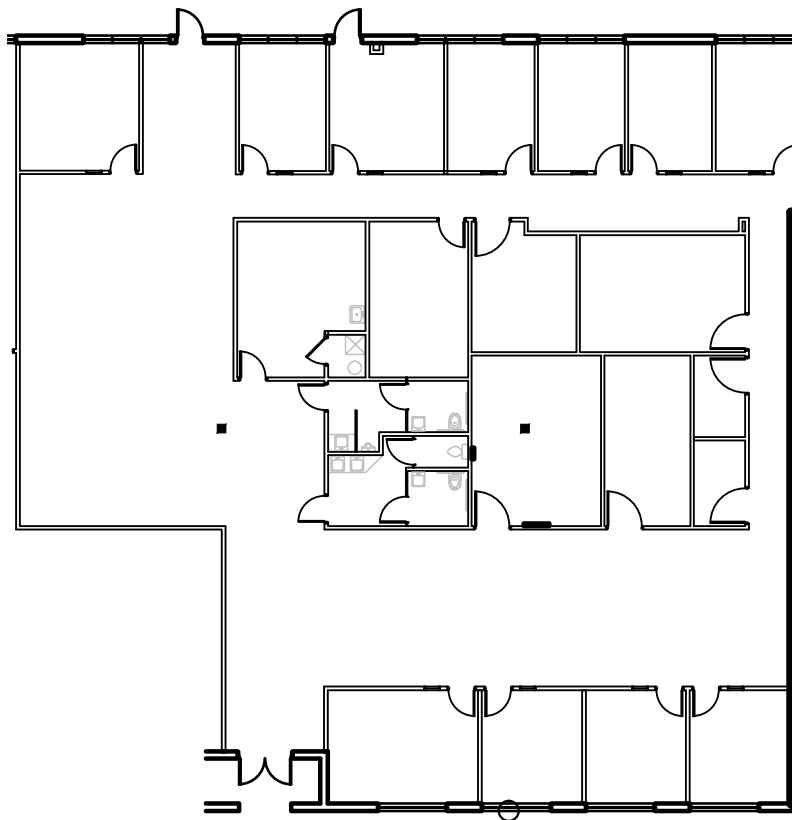
Justin Cope

Justin.Cope@avisonyoung.com

Lisa Hernandez

Lisa.Hernandez@avisonyoung.com

SUITE 300 - 7,417 SF



For more Information, Contact:

954.903.3900

Greg Martin

Greg.Martin@avisonyoung.com

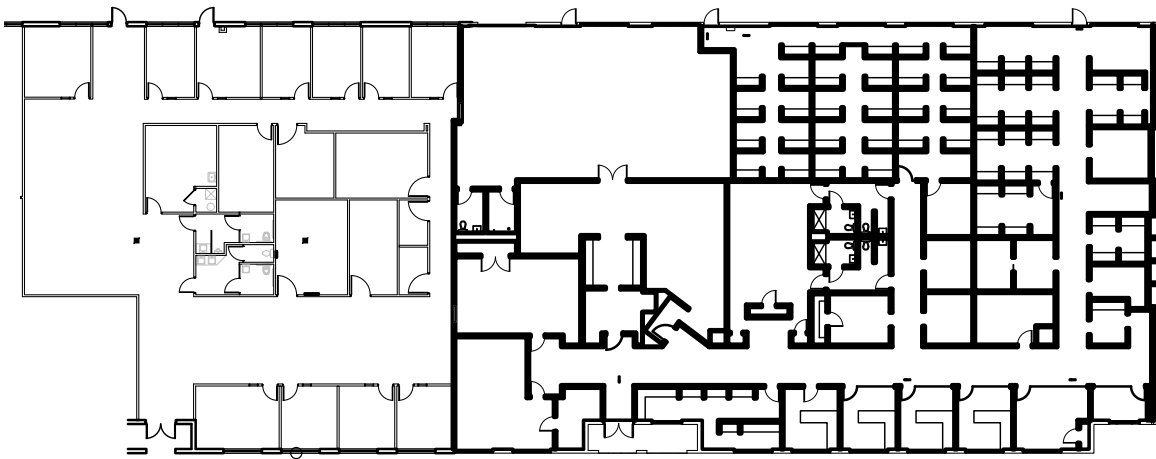
Justin Cope

Justin.Cope@avisonyoung.com

Lisa Hernandez

Lisa.Hernandez@avisonyoung.com

SUITE 215/300A/300 - 20,716 SF



For more Information, Contact:

954.903.3900

Greg Martin

Greg.Martin@avisonyoung.com

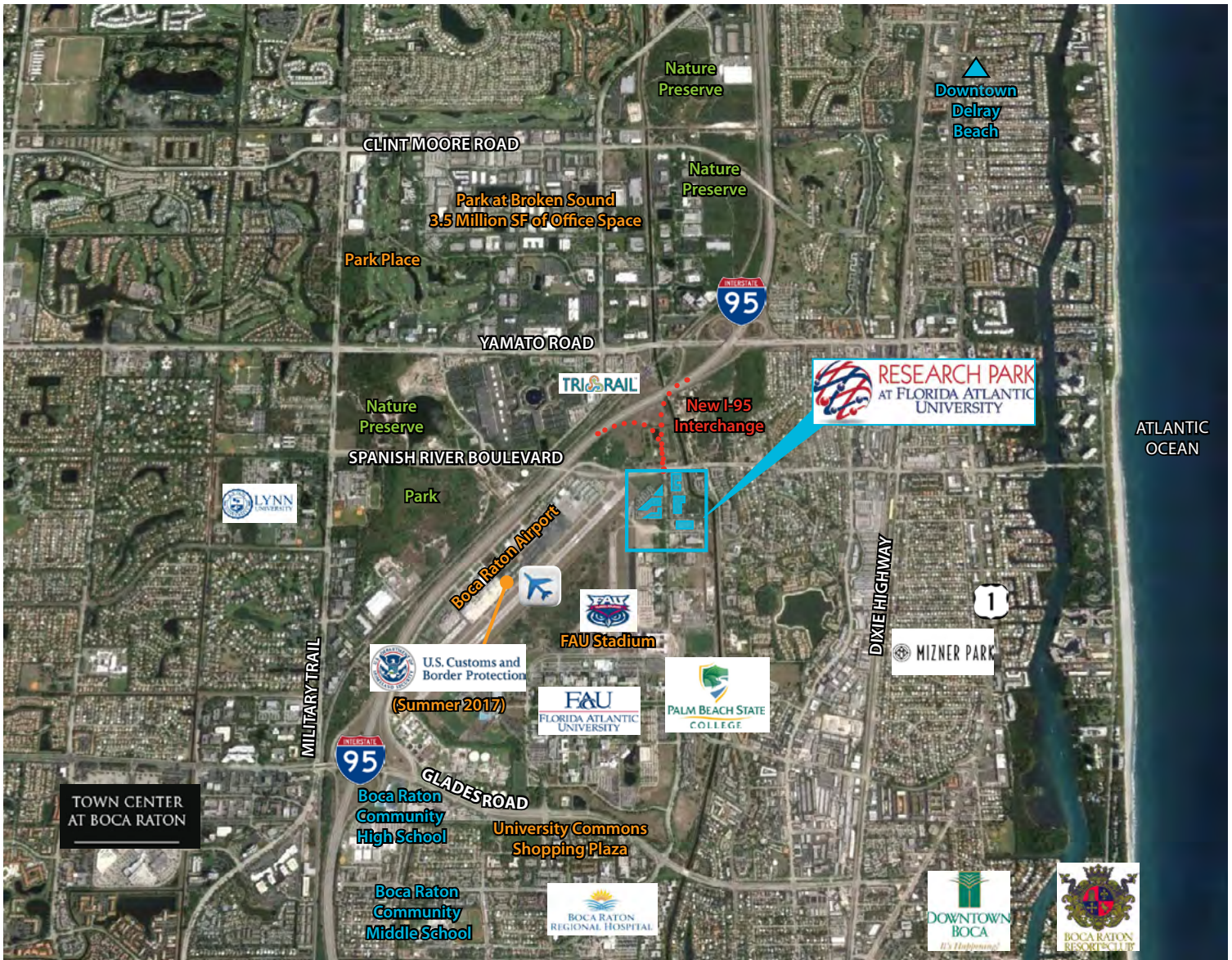
Justin Cope

Justin.Cope@avisonyoung.com

Lisa Hernandez

Lisa.Hernandez@avisonyoung.com

PROPERTY LOCATION



For more Information, Contact:

954.903.3900

Greg Martin

Greg.Martin@avisonyoung.com

Justin Cope

Justin.Cope@avisonyoung.com

Lisa Hernandez

Lisa.Hernandez@avisonyoung.com